

Latex-3300 (Ricoh G5x5)

Environmental Friendly 3.2m Latex Printer

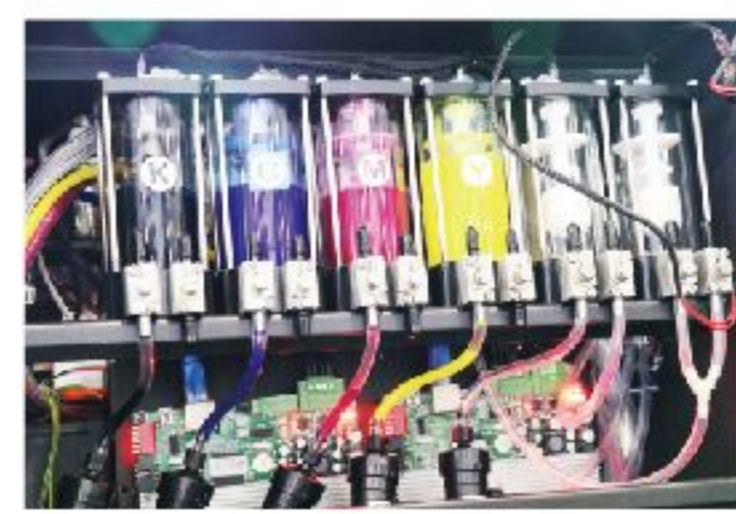


Water-based Latex Ink



* 3.2m 5pcs Ricoh Gen5 Heads

Production mode	100 m ² /h
Quality mode	70 m ² /h
High quality mode	35 m ² /h



CARRIAGE SYSTEM

Robust structure design secures stable carriage more ment and printing performance.



EMERGENCY STOP BUTTON

Makes sure safety and stability for emergency status.



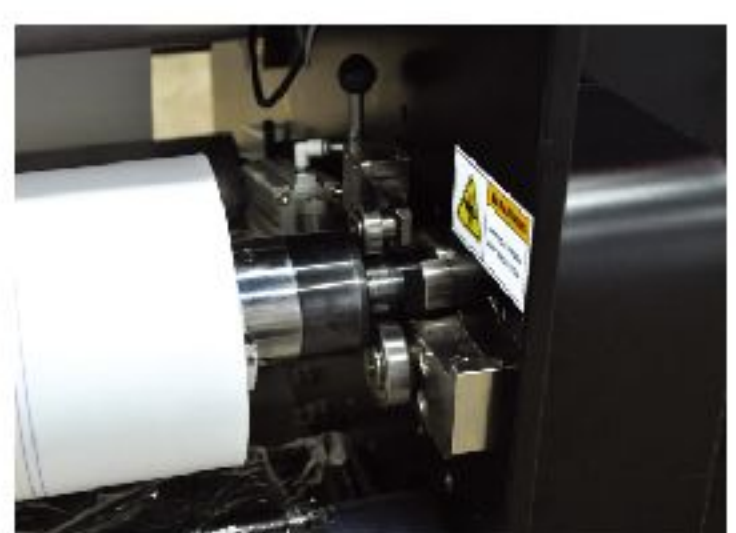
AIR DEGASSING UNITS

It removes micro bubbles in ink while transferring ink to main ink tank.



PLATFORM HEATING PLATE

Latex ink with the platform heating panel helps to accelerate drying, avoid ink oxidation and prolong color retention time.



AIR-SHAFT ROLL

Adjust Air-shaft roll to install media more conveniently.



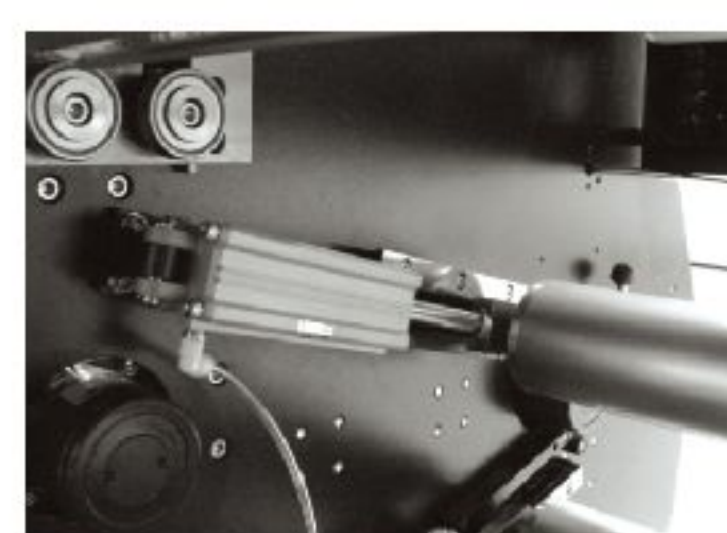
LEVEL MEDIA ROLL

Decreasing wrinkles during substrate's feeding and raising the friction of main roll for smooth feeding operation for all kind of fabrics.



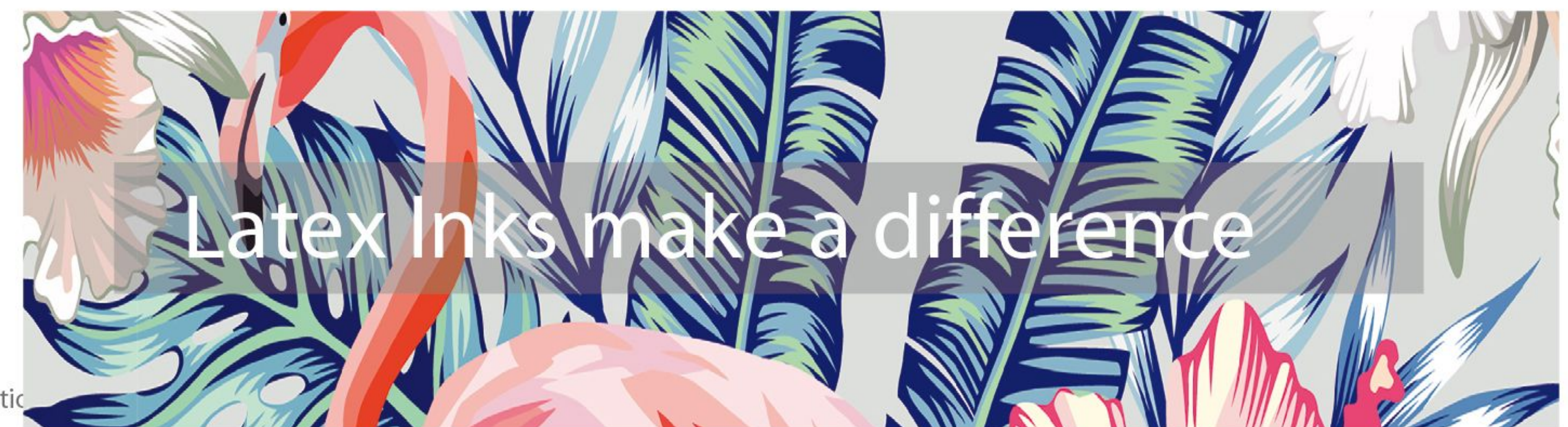
FRONT DRYER

Applied FIN to the out-side of dryer for wide dry after print. It could dry textile material(s) perfectly on any mode of pass(es).



MEDIA TENSION CONTROL SYSTEM

Electrical pneumatic control tension generates constant tension of various materials automatically.



Latex Inks make a difference

Achieving amazing colors

Quick dry and no need laminating, highly improves the color performance. Sharpen the quality of any substrate with the vibrant color gamut of Latex Inks and a thin ink layer preserving media feel.

Outdoor thick scratch resistance

The latex composition in the ink is heated and dried to lock the pigment on the surface of the material, avoiding the oxidation of the pigment, thus preserving the color for a longer time and effectively preventing scratching.

Designed with the environment in mind

In addition to delivering outstanding image quality, consistency, and durability, water-based Latex Inks provide an attractive environmental protection for both printing service providers and customers.



Added optimizer output ,can be printed on uncoated materials, making the output more delicate, the colors more firm, and the picture saved longer.Can be directly printed on wallpaper, wallcovering, uncoated PVC & PET materials

● Technical Specifications

HEAD	5pcs Ricoh Gen5 (7picoliter nominal drop size)
INKS	Water based Latex Ink , 4 colors (C, M, Y, K)
INK CAPACITY	Main ink pail 2.5L
MATERIAL TYPE	Wall cloth, wall paper, silk cloth, half transparent gauze and ect...
MATERIAL SIZE	Width : 3.2Meter , Roll Diameter : 400mm
PRINTING METHOD	Roll to Roll
MAX MATERIAL THICKNESS	1MM
PRINTING SPEED	Production mode : 100sqm/h Quality mode : 70sqm/h High quality mode : 35sqm/h
RESOLUTION	360*600dpi, 720*600dpi, 720*900dpi,720*1200dpi,720*1800dpi
MAIN PROCESSOR & S/W	Intel I3 & Windows OS
POWER	Operating mode : 25KW Sleep mode : 600W
ENVIRONMENT	Temperature: 18℃ -26 ℃ , Humidity: 30%-75% (RH)
CONNECTOR	USB 3.0
RIP	ONYX
POWER	AC220-240V, 50/60Hz, 40A
PACKING DIMENSION & WEIGHT	5,840(W) x 1,250(D) x 2,000(H) (Unit : mm) 1,550Kg , 3,417lb(Pound)